

# THE HENDRICKS

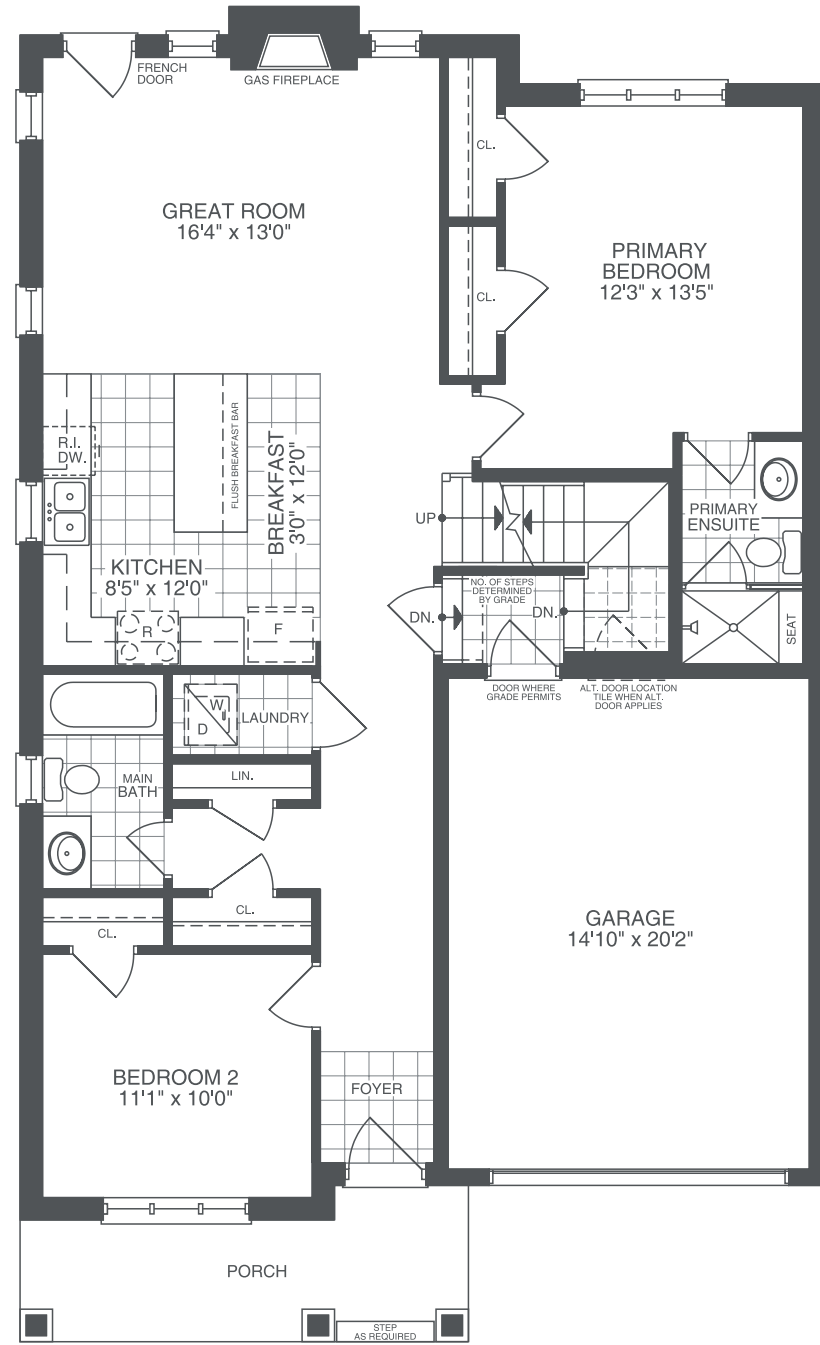
ELEVATIONS A & B  
3 BEDS | 3 BATHS



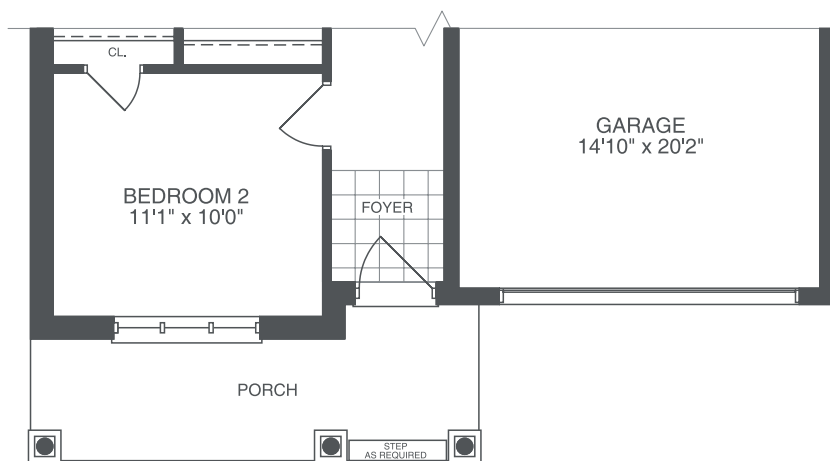
**ELEVATION A 1838 SQ. FT**  
+851 SQ. FT. OPT. FINISHED BASEMENT



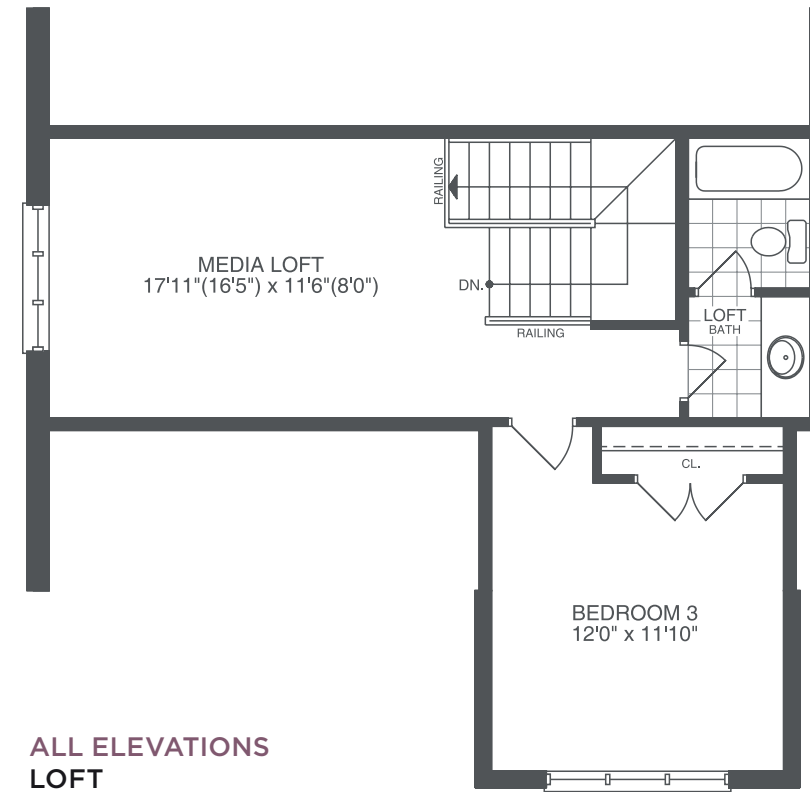
**ELEVATION B 1838 SQ. FT**  
+851 SQ. FT. OPT. FINISHED BASEMENT



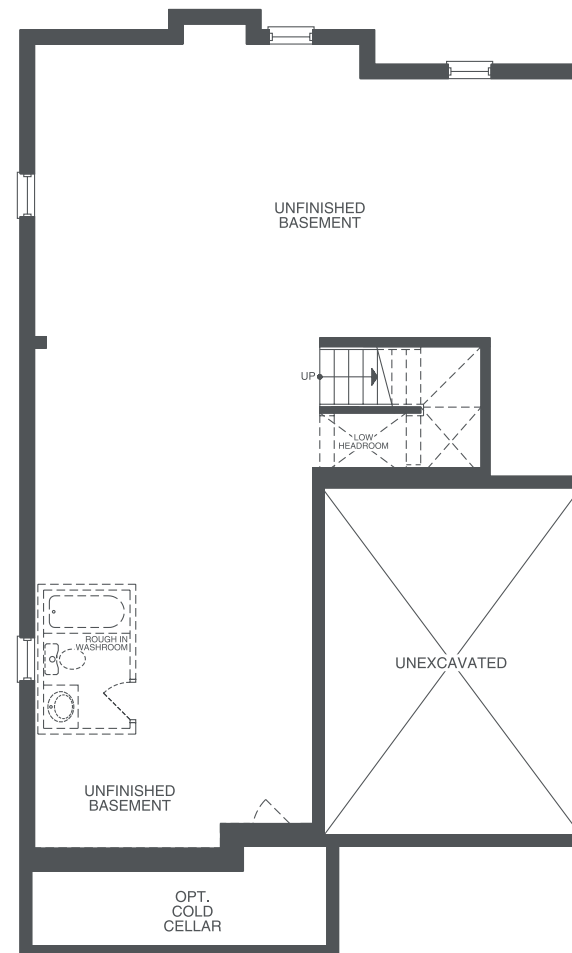
**ELEVATION A  
FIRST FLOOR**



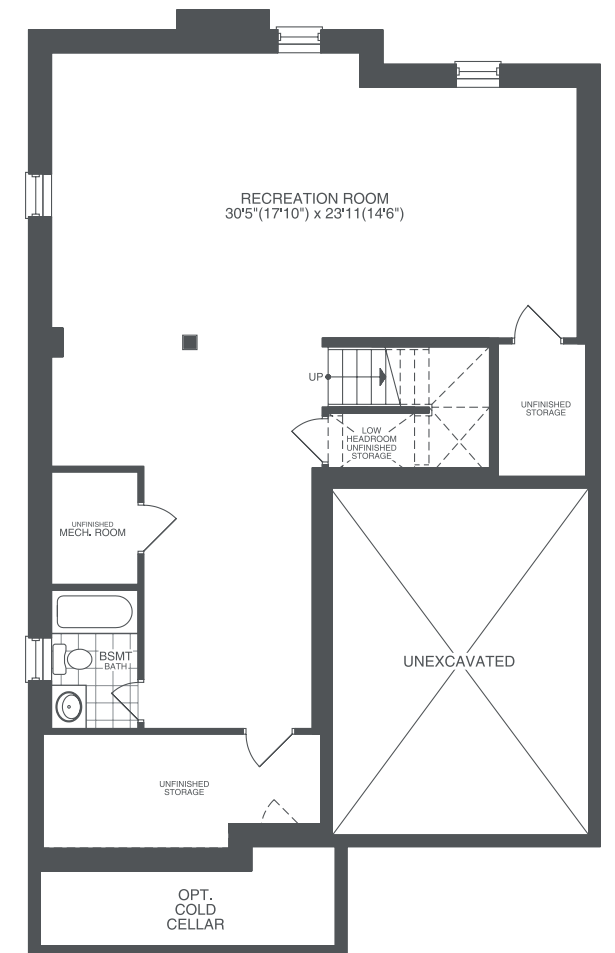
**ELEVATION B  
FIRST FLOOR**



**ALL ELEVATIONS  
LOFT**



**ALL ELEVATIONS  
BASEMENT**



**ALL ELEVATIONS  
OPT. FINISHED BASEMENT**